



TRUE BLUE TB44 ADVANCED LITHIUM-ION BATTERY

AVAILABLE FROM BLACKHAWK

Lithium-ion batteries offer modern technology advantages including stable chemistry, faster charging, consistent output, excellent cycle life and superior cost performance.

True Blue TB44 Advanced Lithium-ion Battery

Now available for King Air 300, King Air 350, Caravan 208 and 208B aircraft.

The True Blue TB44 Advanced Lithium-ion Battery is **engineered to deliver up to 40% weight savings** and an overall lower cost of ownership, with 50–90% less scheduled maintenance cost, 2-year maintenance intervals, efficient engine starts and **2-3x longer useful battery life**. The TB44 is ideal for the turbine market, including fixed-wing, rotorcraft, and emergency power applications.

FEATURES

- Up to 40% lighter weight than lead-acid or nickel-cadmium alternatives
- 3x the energy per kilogram when compared to lead-acid and nickel-cadmium cells thanks to Advanced NanoPhosphate® lithium-ion cell chemistry
- 7 engine starts in 7 minutes
- 15 minutes for complete recharge when the battery is fully discharged on a typical aircraft
- Superior performance at extremely high temperatures (up to 70°C/158°F)
- Automatic internal heater
- Communicates ARINC 429 data to the cockpit
- Higher voltage during engine start, less wear, less maintenance and increased useful life
- 2-year maintenance interval, 50 – 90% savings on maintenance costs
- 8 years (average) useful life
- Designed and built in Wichita, Kansas, USA
- 2-year limited warranty
- FAA TSO certified



Power

3x as much energy per kilogram



Safety

NanoPhosphate® is stable chemically, providing the foundation for safe systems



Life

Excellent calendar and cycle life with consistent performance over extended use



Energy

Higher useable energy means greater battery utilization and lower cost



TRUE BLUE POWER 

TB44 True Blue Power lithium-ion battery provides significantly increased cranking amps and an 8 year average useful battery life.

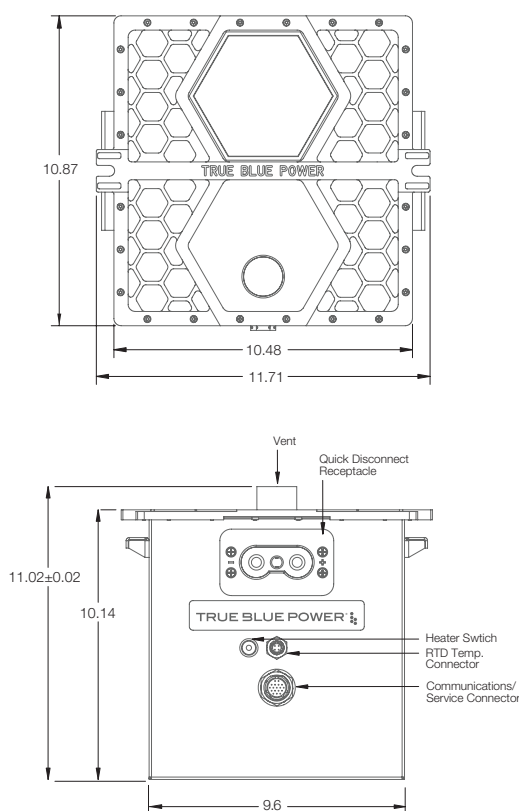


BLACKHAWK
A E R O S P A C E
U P G R A D E S

“ We work in an environment where we are on standby a lot. We can sit on the ramp for a considerable time with power on the aircraft, and then have to depart at a moment’s notice. We need confidence that our battery can start our turbine quickly and efficiently. The TB44 does that each and every time. Couple that with ease of maintenance, and it’s a win-win. ”

Gordon Cox *General Manager, Avionics 2000*

TRUE BLUE POWER®
A division of Mid-Continent Instrument Co., Inc.



Caravan configuration depicted

TECHNICAL SPECIFICATIONS

| | |
|------------------------------|--|
| Model Numbers | TB44 |
| Part Numbers | 6430044-2 |
| Capacity | 46 amp-hour battery nominal at 23°C/73.4°F |
| Charge Voltage | 28 VDC nominal |
| Output Voltage | 26.4 VDC nominal |
| Output Current | 750A continuous, 1500A max |
| Technology | Advanced NanoPhosphate® lithium-ion cell chemistry |
| Protection | Overcharge, over-discharge, over-current, short circuit, over-temperature and under-temperature |
| Energy Density | 52.0 Wh/kg 64.6 Wh/liter |
| Operating Temperature | -40°C to 70°C (-40°F to 158°F) |
| Weight | 51.7 lbs. (23.5 kg) |
| Dimensions | 10.87" L x 10.48" W x 10.14" H |
| Configuration | 8S19P; 1 parallel x 8 in series x 19 |
| Maintenance | 2-year maintenance interval; offers 50 – 90% savings on maintenance costs |
| Useful Life | 8 years (average) |
| Case | Powder-coated steel, blue |
| Certification | FAA TSO certified to C179a ETSO certified to C179a RTCA DO-311 qualified RTCA DO-160G qualified UNDOT/IATA qualified |



LET US HELP BOOST POWER AND CUT COSTS

CONTACT US TODAY

Learn how a True Blue Power Lithium-ion Battery helps you increase reliability and reduce costs.

BLACKHAWK.AERO

+1 (254) 755 6711 | info@blackhawk.aero

Blackhawk Upgrades 7601 Karl May Drive, Waco, TX 76708